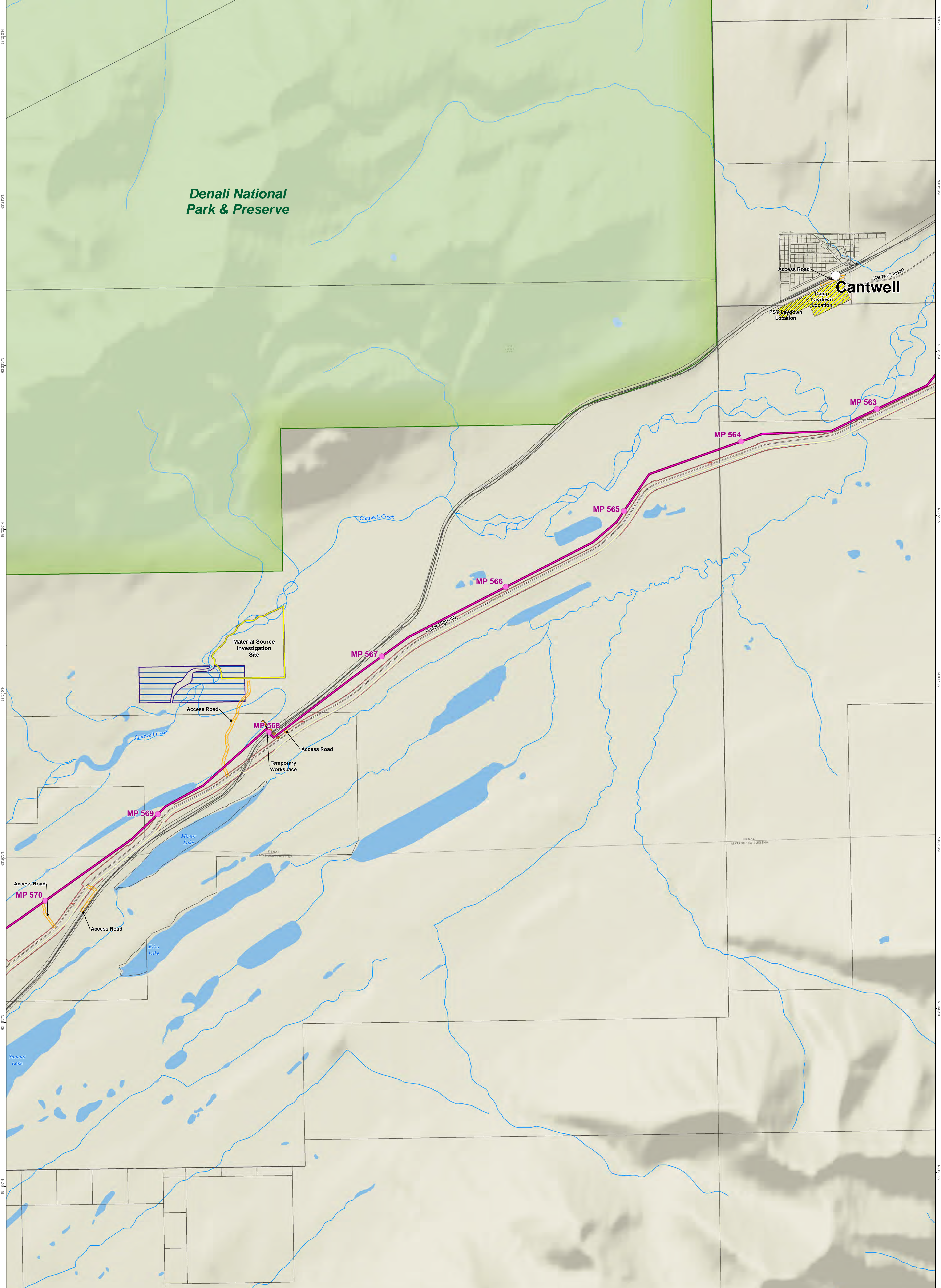
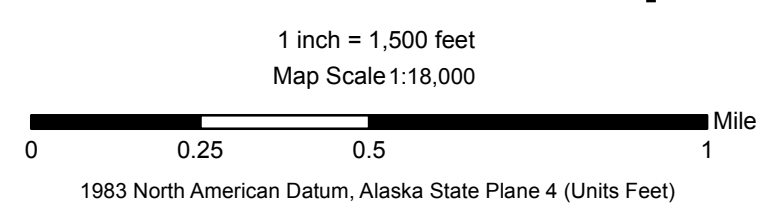


Denali National Park & Preserve


Cantwell



Alaska Stand Alone Pipeline / ASAP
36" Buried Natural Gas Pipeline
Cantwell Area Map



- ASAP Milepost Rev 6
- ASAP Alignment Rev 6
 - Permanent Easement (53 ft)
 - Construction Easement (120 ft)
- ASAP Alignment Rev 5
- Survey Boundary (DNR 4/25/14)
- Native Allotment (BLM 12/19/13)
- Highway Right-of-Way
- Access Road Footprint
- Camp/Pipe Laydown
- Material Source Investigation Site
- Temporary Workspace



ASAP
 Alaska's In-State Gas Pipeline

Alaska Gasline Development Corporation
 3201 C Street, Suite 2001 Anchorage, AK 99503
 P 907.330.6300 | F 907.330.6309 | www.agdc.us

Document ID	004-C-22-D-Y-0146
File Name	ASAP_Cantwell_Community_WallMap_3of4_140808
Date	August 14, 2014

NOTICE - THE ALASKA GASLINE DEVELOPMENT CORPORATION (AGDC) HAS APPROVED THE INFORMATION CONTAINED IN THIS DOCUMENT FOR PUBLIC RELEASE. HOWEVER, AGDC MAKES NO REPRESENTATION OR WARRANTY THAT THE INFORMATION, OR ANY PART OF IT, IS ACCURATE OR RELIABLE OR THAT AGDC HAS RECEIVED OR WILL RECEIVE ANY AUTHORIZATION NECESSARY TO PERMIT AGDC TO CONSTRUCT ANY PIPELINE OR OTHER PROJECT. ANY ACTION TAKEN OR NOT TAKEN OR EXPENDITURE MADE OR NOT MADE BY ANY PERSON BASED ON THE INFORMATION INCLUDED HEREIN IS AT SUCH PERSON'S OWN RISK AND RESPONSIBILITY, AND NO LIABILITY SHALL ARISE AGAINST AGDC AS A CONSEQUENCE THEREOF.